

CASE STUDY TE ARAI, MANGAWHAI NORTHLAND, NZ

FLEXI-C-MENT – STABILIZING INSITU SAND



PRODUCT FLEXI-C-MENT CO POLYMER SOIL STABILIZER

ENGINEER NONE

CLIENT TARA ITI GOLF COURSE

CONTRACTOR TARMAC NORTH LTD

LOCATION MANGAWHAI, NORTHLAND, NEW ZEALAND

WHERE SCIENCE



MEETS THE EARTH

PROJECT – May 2014 to October 2017

New Zealand's first-ever American-style private golf club with members handpicked to ensure the club maintained a laid-back, intimate vibe. Located on the Te Arai coast on an enormous sand dune, the developers brief was to build roads that looked like sand. Gravel Lock came up with a design, stabilizing the existing sand with minimal aggregate and giving the owner what he wanted. Over 9kms of cart roads were constructed over 2/3 years as the golf course transformed into what it is today.

DESIGN – 1ltr Flexi-C-Ment and 4kgs Cement per sqm

Treatment of a sand/aggregate mix

45000sqm treated at 100mm deep

Equipment – rock crusher, grader, roller, watercart, cement spreader, loader

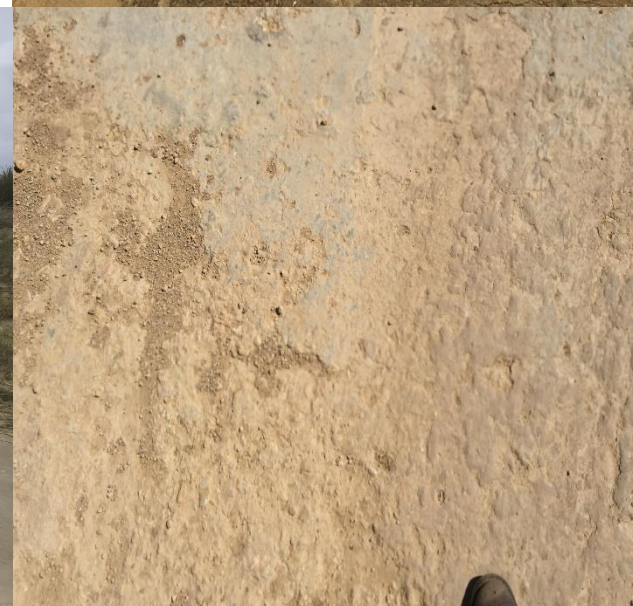
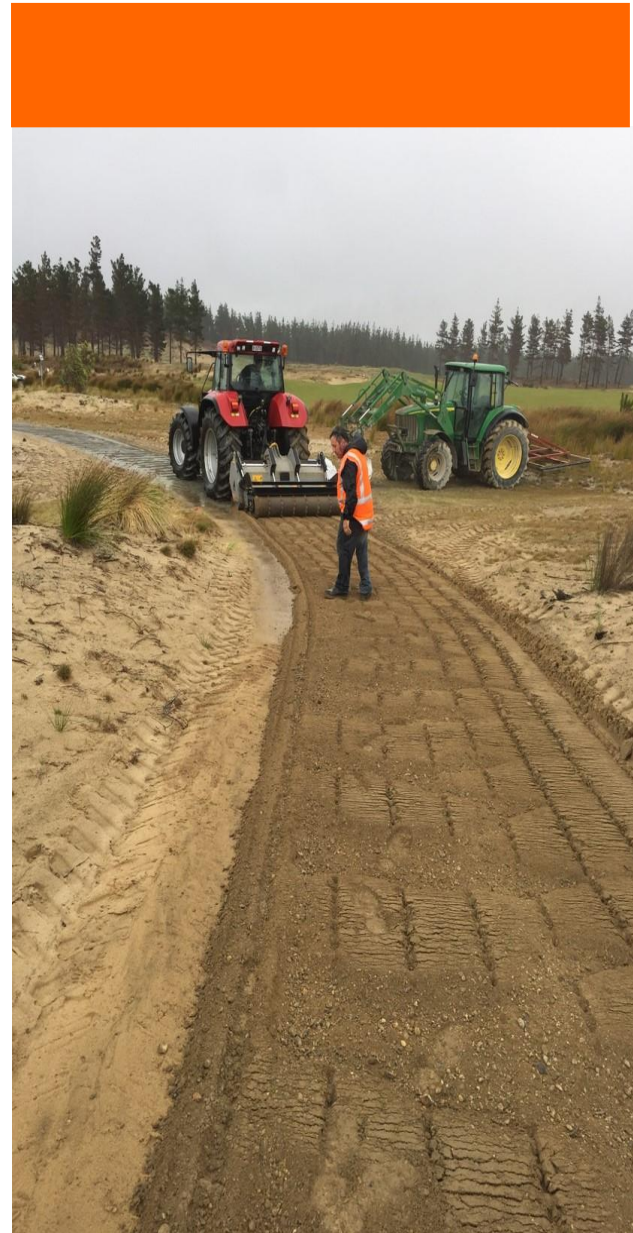
Project was over 2/3 years as each section of the course was developed.

INSTALATION

Tara Iti management brief was that the roads were to remain looking like sand but stabilized like roads. To ensure the client's satisfaction Gravel Lock staff were present on site at critical installation stages. Communication was consistent throughout the project and staff were available to respond to any questions that the client may have had around the design brief.

THE PRODUCT PROVIDED THE BENEFITS TO THE PROJECT

- Gave the client a cost effective, long lasting finish
- Minimised the aggregate requirements for the project
- Stabilized the insitu fine grain sand
- Created an aesthetically pleasing finish for the client
- Lowered maintenance costs on the finished roads



GRAVEL LOCK LTD

P: +64 21677064

E: info@gravellock.co.nz

www.gravellock.co.nz